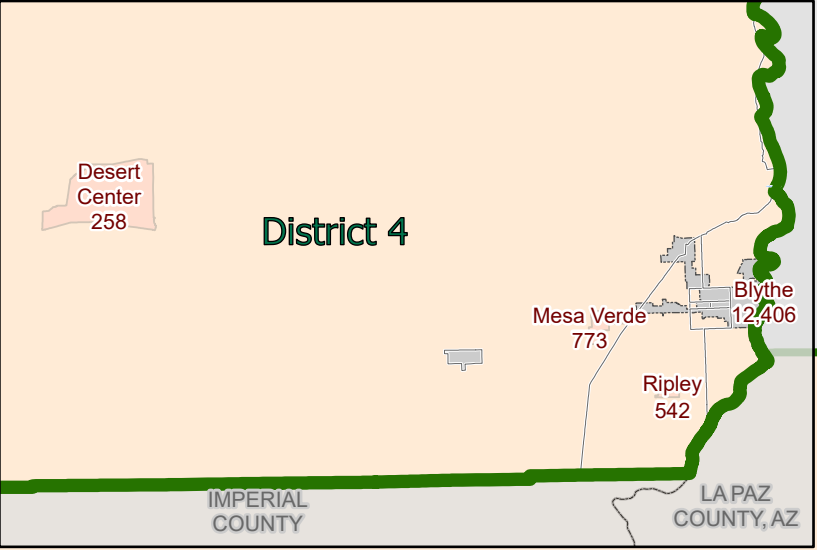
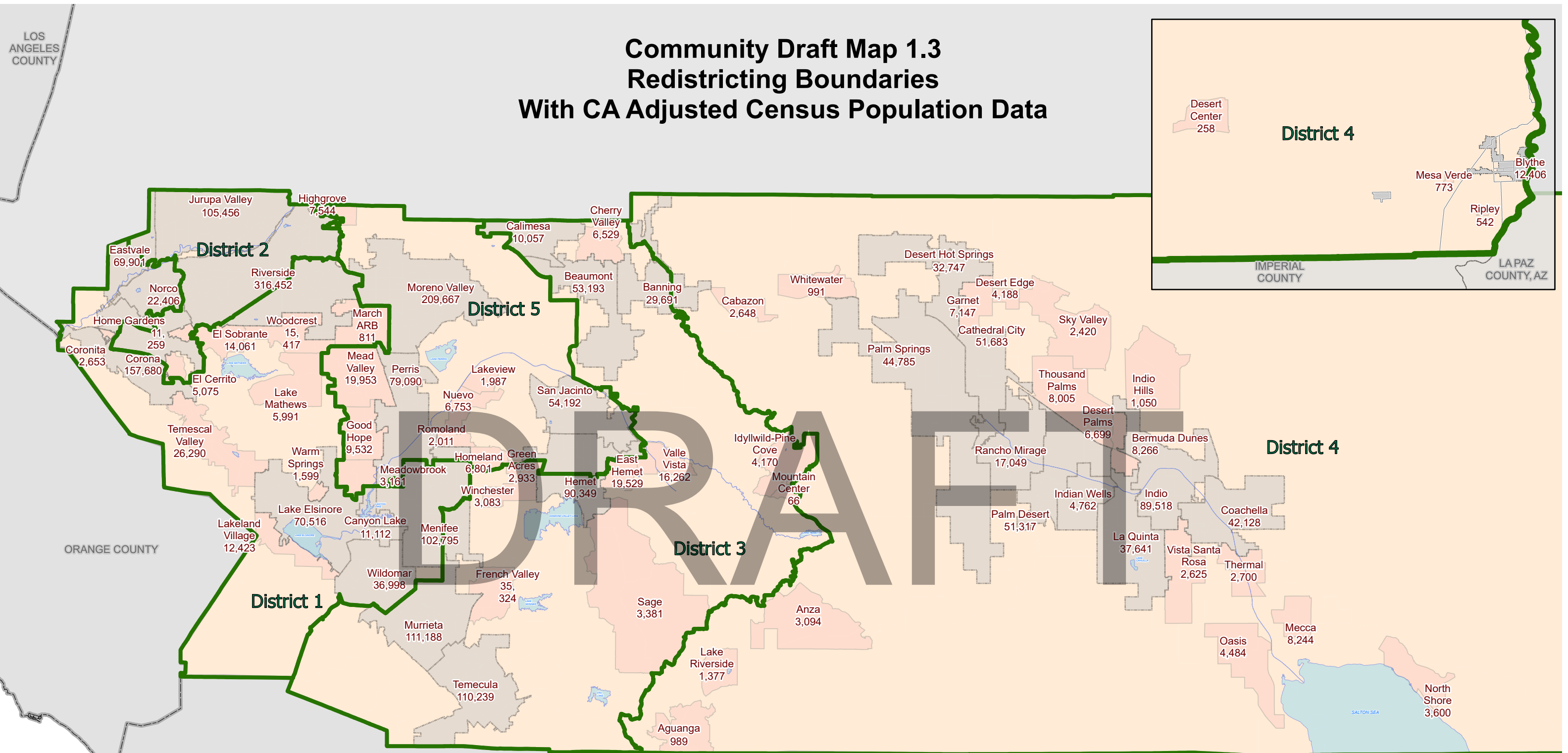


# Community Draft Map 1.3

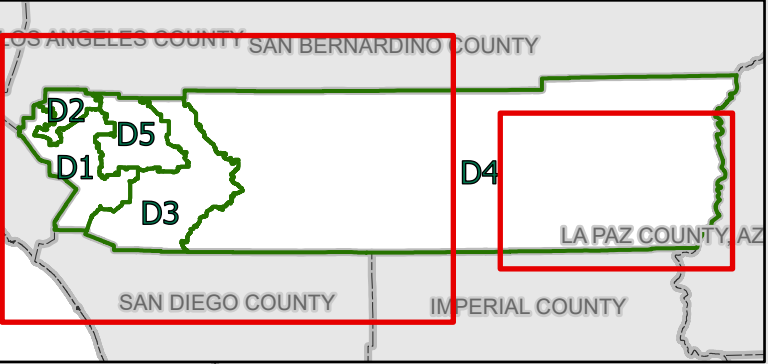
## Redistricting Boundaries

### With CA Adjusted Census Population Data



- Cities
- Census Designated Places
- Census Tracts
- Community Draft Map 1.3 Redistricting Boundary

District	Population 2020	Target Population	Variance from 2020 Target	Change Need to Reach Target
1	483,112	483,488	-0.1%	376
2	483,099	483,488	-0.1%	389
3	485,054	483,488	0.3%	-1,566
4	482,220	483,488	-0.3%	1,268
5	483,953	483,488	0.1%	-465



California Adjusted 2020 US Census Public Law File 94-171

Table 1. California Adjusted 2020 Census Total Population by Race/Ethnicity

District	Total Population	Hispanic	White	Black	American Indian/ Alaskan Native	Asian	Hawaiian or Other Pacific Islander	Other Race	Two or more minority race
1	483,112	181,293	195,626	27,938	1,563	51,454	1,483	2,636	21,119
	100%	37.5%	40.5%	5.8%	0.3%	10.7%	0.3%	0.5%	4.4%
2	483,099	297,795	105,572	25,370	1,657	35,955	1,395	2,585	12,770
	100%	61.6%	21.9%	5.3%	0.3%	7.4%	0.3%	0.5%	2.6%
3	485,054	160,419	221,933	26,894	3,695	42,409	1,614	2,555	25,535
	100%	33.1%	45.8%	5.5%	0.8%	8.7%	0.3%	0.5%	5.3%
4	482,220	257,889	179,181	12,868	3,180	14,900	454	2,221	11,527
	100%	53.5%	37.2%	2.7%	0.7%	3.1%	0.1%	0.5%	2.4%
5	483,953	303,933	86,417	53,458	1,864	20,100	1,828	2,577	13,776
	100%	62.8%	17.9%	11.0%	0.4%	4.2%	0.4%	0.5%	2.8%
COUNTY TOTAL	2,417,438	1,201,329	788,729	146,528	11,959	164,818	6,774	12,574	84,727
	100%	49.7%	32.6%	6.1%	0.5%	6.8%	0.3%	0.5%	3.5%

Table 2. California Adjusted 2020 Census Total Population by Race/Ethnicity Over the Age of 18

District	Total Population (Over 18)	Hispanic (Over 18)	White (Over 18)	Black (Over 18)	American Indian/ Alaskan Native (Over 18)	Asian (Over 18)	Hawaiian or Other Pacific Islander (Over 18)	Other Race (Over 18)	Two or more minority race (Over 18)
1	366,511	125,097	160,069	22,202	1,241	41,141	1,173	1,882	13,706
	100%	34.1%	43.7%	6.1%	0.3%	11.2%	0.3%	0.5%	3.7%
2	364,212	210,442	90,542	20,443	1,405	29,712	1,039	1,830	8,799
	100%	57.8%	24.9%	5.6%	0.4%	8.2%	0.3%	0.5%	2.4%
3	361,032	107,570	178,174	20,448	2,670	33,691	1,257	1,763	15,459
	100%	29.8%	49.4%	5.7%	0.7%	9.3%	0.3%	0.5%	4.3%
4	380,072	179,275	165,225	10,258	2,419	12,673	332	1,575	8,315
	100%	47.2%	43.5%	2.7%	0.6%	3.3%	0.1%	0.4%	2.2%
5	350,934	207,321	73,270	39,816	1,383	16,858	1,372	1,712	9,202
	100%	59.1%	20.9%	11.3%	0.4%	4.8%	0.4%	0.5%	2.6%
COUNTY TOTAL	1,822,761	829,705	667,280	113,167	9,118	134,075	5,173	8,762	55,481
	100%	45.5%	36.6%	6.2%	0.5%	7.4%	0.3%	0.5%	3.0%

CA Adjusted 2020 Census Difference from 2021 Target Supervisory District Population of 483,488

District	Number	Percent	Percent Spread (Largest - Smallest)
1	376	0.08%	0.59%
2	389	0.08%	
3	-1,566	-0.32%	
4	1,268	0.26%	
5	-465	-0.10%	

Source: California Statewide Database Public Law (P.L.) 94-171 and US Census Bureau Website, enacted by Congress in December 1975, requires the Census Bureau to provide states the opportunity to identify the small area geography for which they need data in order to conduct legislative redistricting.

For more information about Public Law (P.L.) 94-171: <https://www.census.gov/programs-surveys/decennial-census/about/rdo/summary-files.html>

California Adjusted Citizen Voting Age Population 2020 US Special Tabulation From the 2015-2019 5-Year American Community Survey (ACS)

Table 3. Citizen Population - (CVAP) 2015-2019 5-year American Community Survey (ACS)

District	Total	Not Hispanic or Latino:	Not Hispanic or Latino:	Not Hispanic or Latino:	Not Hispanic or Latino:	Not Hispanic or Latino:	Not Hispanic or Latino:	Not Hispanic or Latino:	Not Hispanic or Latino:	Not Hispanic or Latino:	Not Hispanic or Latino:	Hispanic or Latino	
		American Indian or Alaska Native Alone	Asian Alone	Black or African American Alone	Hawaiian or Other Pacific Islander Alone	White Alone	Indian or Alaska Native and White	Asian and White	Black or African American and White	Native American Indian or Alaska Native and Black or African American	Remainder of Two or More Race Responses		
1	445,920	287,906	1,444	37,957	26,897	1,162	206,014	2,347	5,770	2,899	245	2,713	158,042
	100%	64.6%	0.3%	8.5%	6.0%	0.3%	46.2%	0.5%	1.3%	0.7%	0.1%	0.6%	35.4%
2	427,556	179,830	1,184	27,150	24,290	785	117,712	1,195	3,122	1,946	131	2,053	247,996
	100%	42.1%	0.3%	6.4%	5.7%	0.2%	27.5%	0.3%	0.7%	0.5%	0.0%	0.5%	58.0%
3	455,201	308,119	3,328	30,683	26,139	2,547	227,063	2,528	6,830	3,698	630	4,135	147,262
	100%	67.7%	0.7%	6.7%	5.7%	0.6%	49.9%	0.6%	1.5%	0.8%	0.1%	0.9%	32.4%
4	415,532	224,703	2,906	11,240	14,827	349	188,889	1,518	1,790	1,552	87	1,080	190,688
	100%	54.1%	0.7%	2.7%	3.6%	0.1%	45.5%	0.4%	0.4%	0.4%	0.0%	0.3%	45.9%
5	412,091	175,229	1,317	15,876	53,806	918	95,947	1,065	1,647	2,794	175	1,362	236,568
	100%	42.5%	0.3%	3.9%	13.1%	0.2%	23.3%	0.3%	0.4%	0.7%	0.0%	0.3%	57.4%
COUNTY TOTAL	2,156,300	1,175,787	10,179	122,906	145,959	5,761	835,625	8,653	19,159	12,889	1,268	11,343	980,556
	100%	54.5%	0.5%	5.7%	6.8%	0.3%	38.8%	0.4%	0.9%	0.6%	0.1%	0.5%	45.5%

Table 4. Citizen Voting Age Population - (CVAP) 2015-2019 5-year American Community Survey (ACS)

DRAFT													
District	CVAP Total	CVAP Not Hispanic or Latino: American Indian or Alaska Native Alone	CVAP Not Hispanic or Latino: Asian Alone	CVAP Not Hispanic or Latino: Black or African American Alone	CVAP Not Hispanic or Latino: Hawaiian or Other Pacific Islander Alone	CVAP Not Hispanic or Latino: White Alone	CVAP Not Hispanic or Latino: American Indian or Alaska Native and White	CVAP Not Hispanic or Latino: Asian and White	CVAP Not Hispanic or Latino: Black or African American and White	CVAP Not Hispanic or Latino: American Indian or Alaska Native and Black or African American	CVAP Not Hispanic or Latino: Remainder of Two or More Race Responses	CVAP Hispanic or Latino	
1	323,735	225,321	1,128	29,496	21,323	955	164,154	1,850	2,905	1,196	220	1,638	98,545
	100%	69.6%	0.3%	9.1%	6.6%	0.3%	50.7%	0.6%	0.9%	0.4%	0.1%	0.5%	30.4%
2	305,657	149,253	1,038	21,570	19,919	743	100,692	966	1,661	967	98	1,229	156,553
	100%	48.8%	0.3%	7.1%	6.5%	0.2%	32.9%	0.3%	0.5%	0.3%	0.0%	0.4%	51.2%
3	322,820	234,503	2,402	23,640	19,772	1,849	177,754	1,645	2,804	1,736	399	2,071	88,393
	100%	72.6%	0.7%	7.3%	6.1%	0.6%	55.1%	0.5%	0.9%	0.5%	0.1%	0.6%	27.4%
4	322,564	198,471	2,202	8,999	11,545	253	171,227	1,309	728	735	72	817	124,082
	100%	61.5%	0.7%	2.8%	3.6%	0.1%	53.1%	0.4%	0.2%	0.2%	0.0%	0.3%	38.5%
5	281,922	136,934	980	12,697	39,200	601	78,910	836	961	1,533	175	692	144,670
	100%	48.6%	0.3%	4.5%	13.9%	0.2%	28.0%	0.3%	0.3%	0.5%	0.1%	0.2%	51.3%
COUNTY TOTAL	1,556,698	944,482	7,750	96,402	111,759	4,401	692,737	6,606	9,059	6,167	964	6,447	612,243
	100%	60.7%	0.5%	6.2%	7.2%	0.3%	44.5%	0.4%	0.6%	0.4%	0.1%	0.4%	39.3%

**Riverside County  
 Supervisorial District Summary**

**Table 5. DOJ Tabulation: Citizen Population (CVAP) 2015-2019 5-year American Community Survey (ACS)**

District	Total	Not Hispanic or Latino: American Indian or Alaska Native	Not Hispanic or Latino: Black or African American	Not Hispanic or Latino: Asian
1	77,314	3,791	29,796	43,727
	100%	4.9%	38.5%	56.6%
2	58,887	2,379	26,236	30,272
	100%	4.0%	44.6%	51.4%
3	73,206	5,856	29,837	37,513
	100%	8.0%	40.8%	51.2%
4	33,833	4,424	16,379	13,030
	100%	13.1%	48.4%	38.5%
5	76,505	2,382	56,600	17,523
	100%	3.1%	74.0%	22.9%
COUNTY TOTAL	319,745	18,832	158,848	142,065
	100%	5.9%	49.7%	44.4%

**Table 6. DOJ Tabulation: Citizen Voting Age Population (CVAP) 2015-2019 5-year American Community Survey (ACS)**

District	DOJ CVAP Total	DOJ CVAP Not Hispanic or Latino: American Indian or Alaska Native	DOJ CVAP Not Hispanic or Latino: Black or African American	DOJ CVAP Not Hispanic or Latino: Asian
1	57,898	2,978	22,519	32,401
	100%	3.9%	29.1%	41.9%
2	46,121	2,004	20,886	23,231
	100%	3.4%	35.5%	39.5%
3	51,999	4,047	21,508	26,444
	100%	5.5%	29.4%	36.1%
4	25,518	3,511	12,280	9,727
	100%	10.4%	36.3%	28.8%
5	56,207	1,816	40,733	13,658
	100%	2.4%	53.2%	17.9%
COUNTY TOTAL	237,743	14,356	117,926	105,461
	100%	4.5%	36.9%	33.0%

Source: Statewide Database 2015-2019 Citizen Voting Age Population, adjusted to reflect reallocated incarcerated persons, on 2020 Census Blocks. The original data source for the Citizen Voting Age Population (CVAP) is the American Community Survey (ACS). The ACS is an ongoing survey by the U.S. Census Bureau sent to approximately 250,000 households each month. The ACS estimates used to develop these data were collected from January 1, 2015 to December 31, 2019 utilizing the 2010 Census block groups, which were disaggregated to the 2020 Census blocks by the Statewide Database.

Because this is a special tabulation of data and not part of the standard data products shown on the Census Bureau's data.census.gov website, these estimates are rounded. Therefore, individual categories may not exactly add to the total.

For example, the sum of each of the race groups for non-Hispanics may not be the same as the estimate given for non-Hispanics. These estimates will

[For more information about CVAP products, visit https://www.census.gov/programs-surveys/decennial-census/about/voting-rights/cvap.html](https://www.census.gov/programs-surveys/decennial-census/about/voting-rights/cvap.html)  
[https://www2.census.gov/programs-surveys/decennial/rdo/technical-documentation/special-tabulation/CVAP\\_2015-2019\\_ACS\\_documentation.pdf](https://www2.census.gov/programs-surveys/decennial/rdo/technical-documentation/special-tabulation/CVAP_2015-2019_ACS_documentation.pdf)