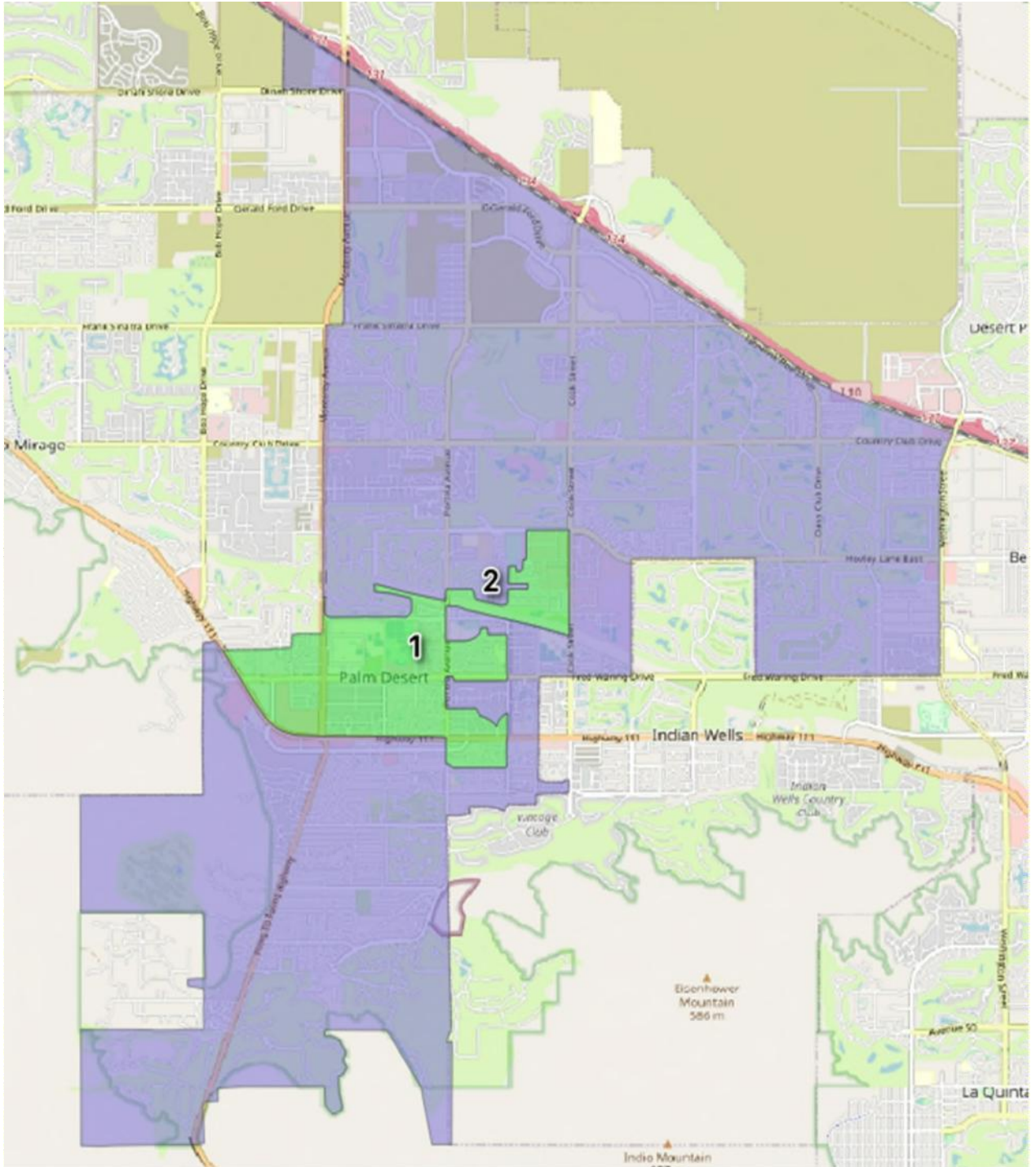


Attachment

Proposed Maps and Demographic Analysis

Map Option 1



Map Option 1 Demographic Analysis

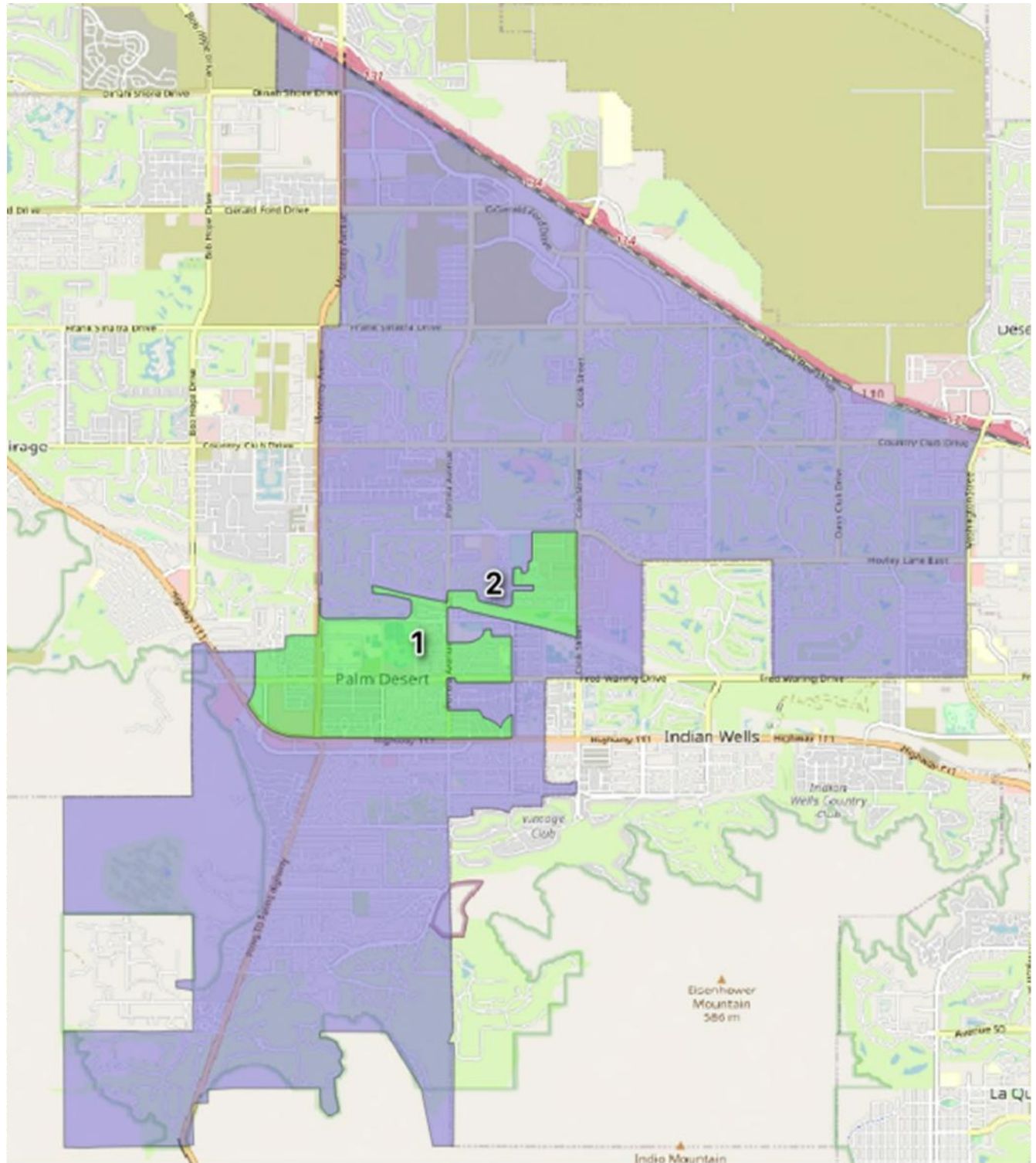
District	Total_Population	Raw Deviation	% Deviation	% of Total Pop	Latino	NL White Alone	NL Black Alone	NL AIAN Alone	NL Asian Alone	NL Hawaiian Alone	NL Other Alone	NL 2+ Races	
1	10,263	(0)	0.00%	20.00%	5,629	3,682	210	25	381	5	48	283	
2	41,054	0	0.00%	80.00%	7,747	28,902	759	98	1,983	52	177	1,336	
Total	51,317												
Ideal	10,263			Total VAP	Latino VAP	NL White Alone VAP	NL Black Alone VAP	NL AIAN Alone VAP	NL Asian Alone VAP	NL Hawaiian Alone VAP	NL Other Race Alone VAP	NL 2+ Races VAP	
Ideal Pop for 4 seats	41,054			District 1	7,972	4,005	3,237	169	17	303	5	35	201
				District 2	36,322	5,777	26,928	648	88	1,696	31	145	1,009
18.4% of total	9,442				44,294	9,782	30,165	817	105	1,999	36	180	1,210
21.6% of total	11,084												

NL = Non-Latino

VAP = Voting Age Population

AIAN = American Indian Alaskan Native

Map Option 2



Map Option 2

Demographic Analysis

District	Total Population	Raw Deviation	% Deviation	% of Total Pop	Latino	NL White Alone	NL Black Alone	NL AIAN Alone	NL Asian Alone	NL Hawaiian Alone	NL Other Alone	NL 2+ Races	
1	9,486	-777	-7.57%	18.49%	5,347	3,278	183	22	353	5	47	251	
2	41,831	777	1.89%	81.51%	8,029	29,306	786	101	2,011	52	178	1,368	
Total	51,317				13,376	32,584	969	123	2,364	57	225	1,619	
Ideal	10,263												
Ideal Pop for 4 seat	41,054				Total VAP	Latino VAP	NL White Alone VAP	NL Black Alone VAP	NL AIAN Alone VAP	NL Asian Alone VAP	NL Hawaiian Alone VAP	NL Other Race Alone VAP	NL 2+ Races VAP
			District 1	7,327	3,791	2,881	147	15	278	5	34	176	
18.4% of total	9,442		District 2	36,967	5,991	27,284	670	90	1,721	31	146	1,034	
21.6% of total	11,084			44,294	9,782	30,165	817	105	1,999	36	180	1,210	

NL = Non-Latino

VAP = Voting Age Population

AIAN = American Indian Alaskan Native