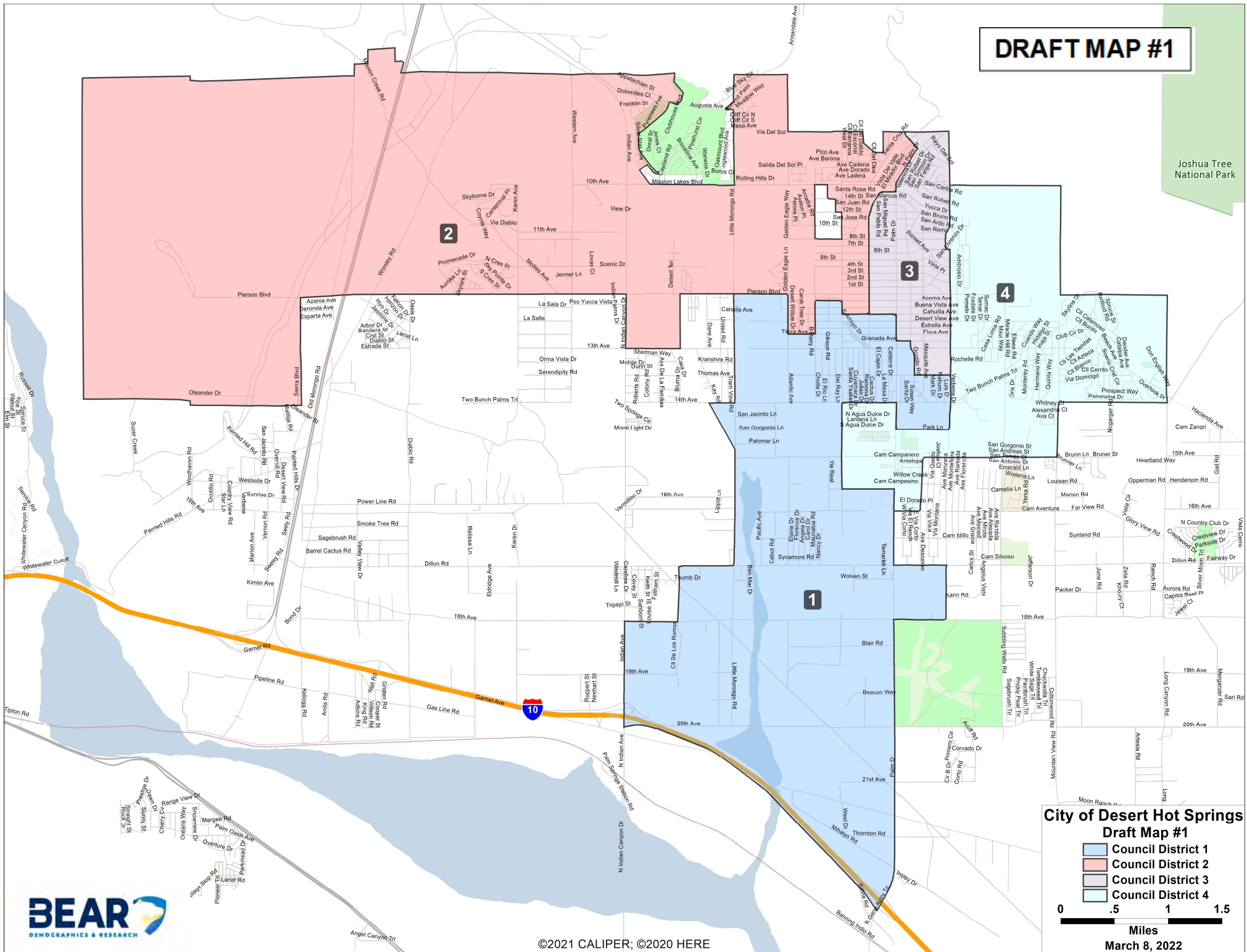


DRAFT MAP #1

DRAFT MAP #1

Joshua Tree National Park



City of Desert Hot Springs Draft Map #1

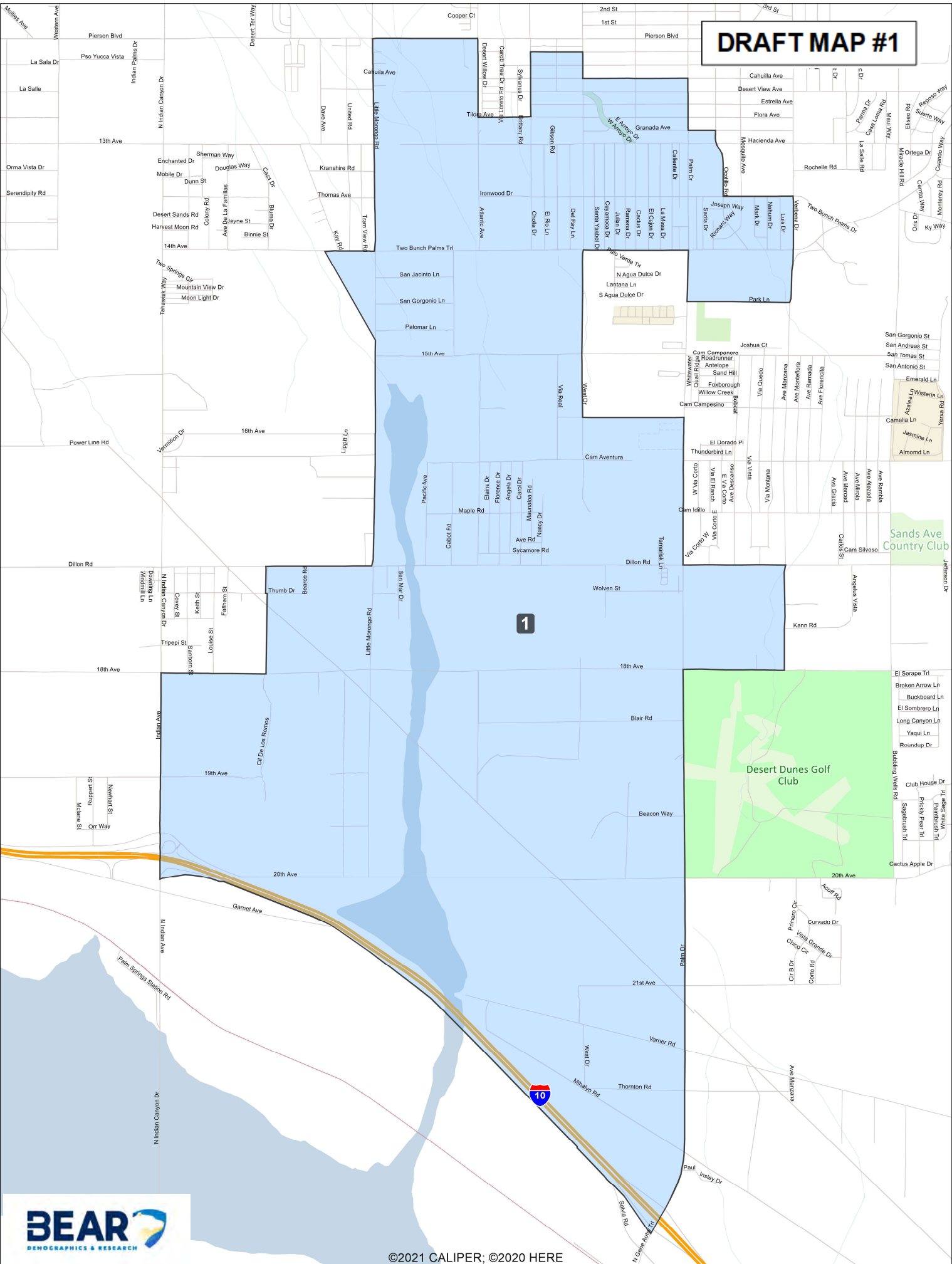
- Council District 1
- Council District 2
- Council District 3
- Council District 4



Miles
March 8, 2022



DRAFT MAP #1

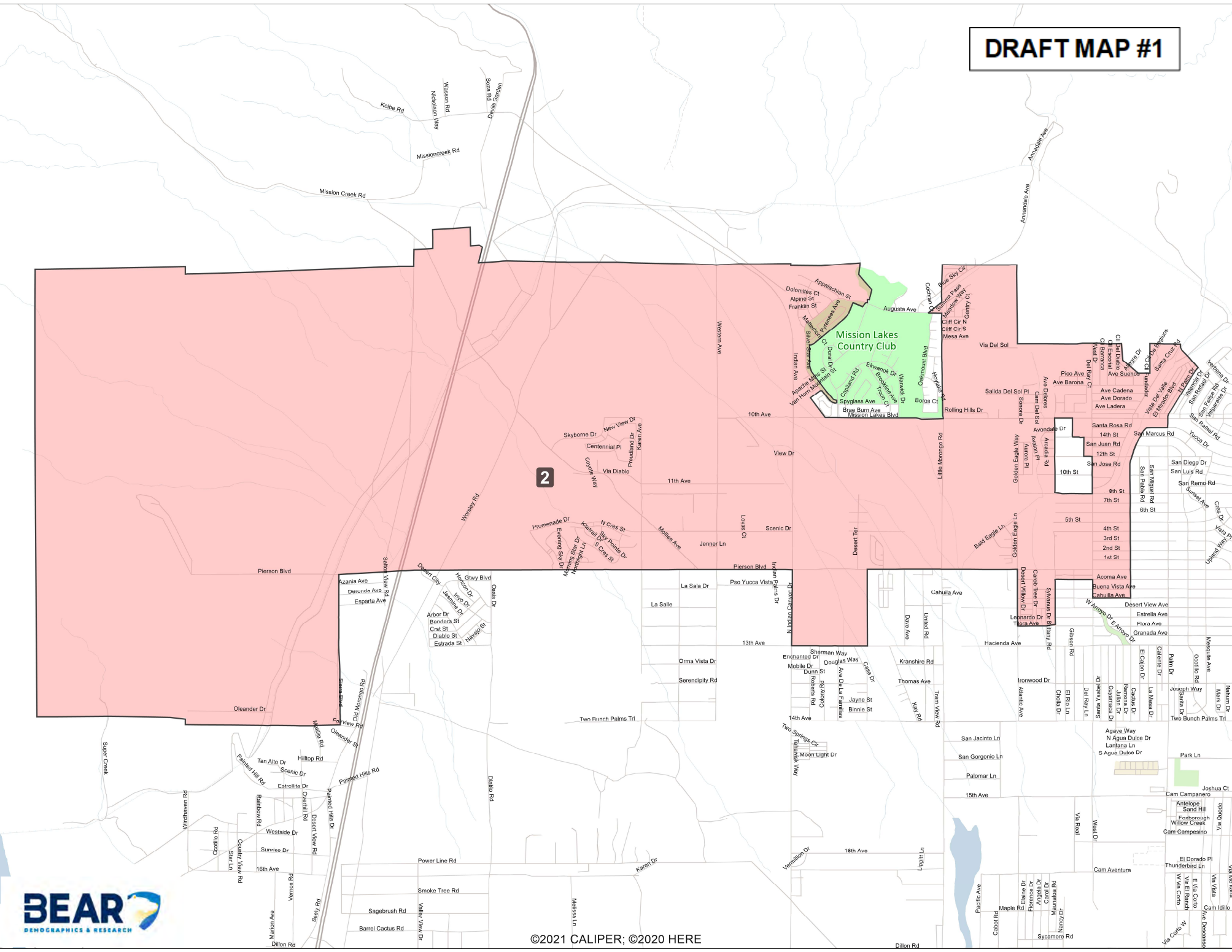


1

Sands Ave Country Club

Desert Dunes Golf Club



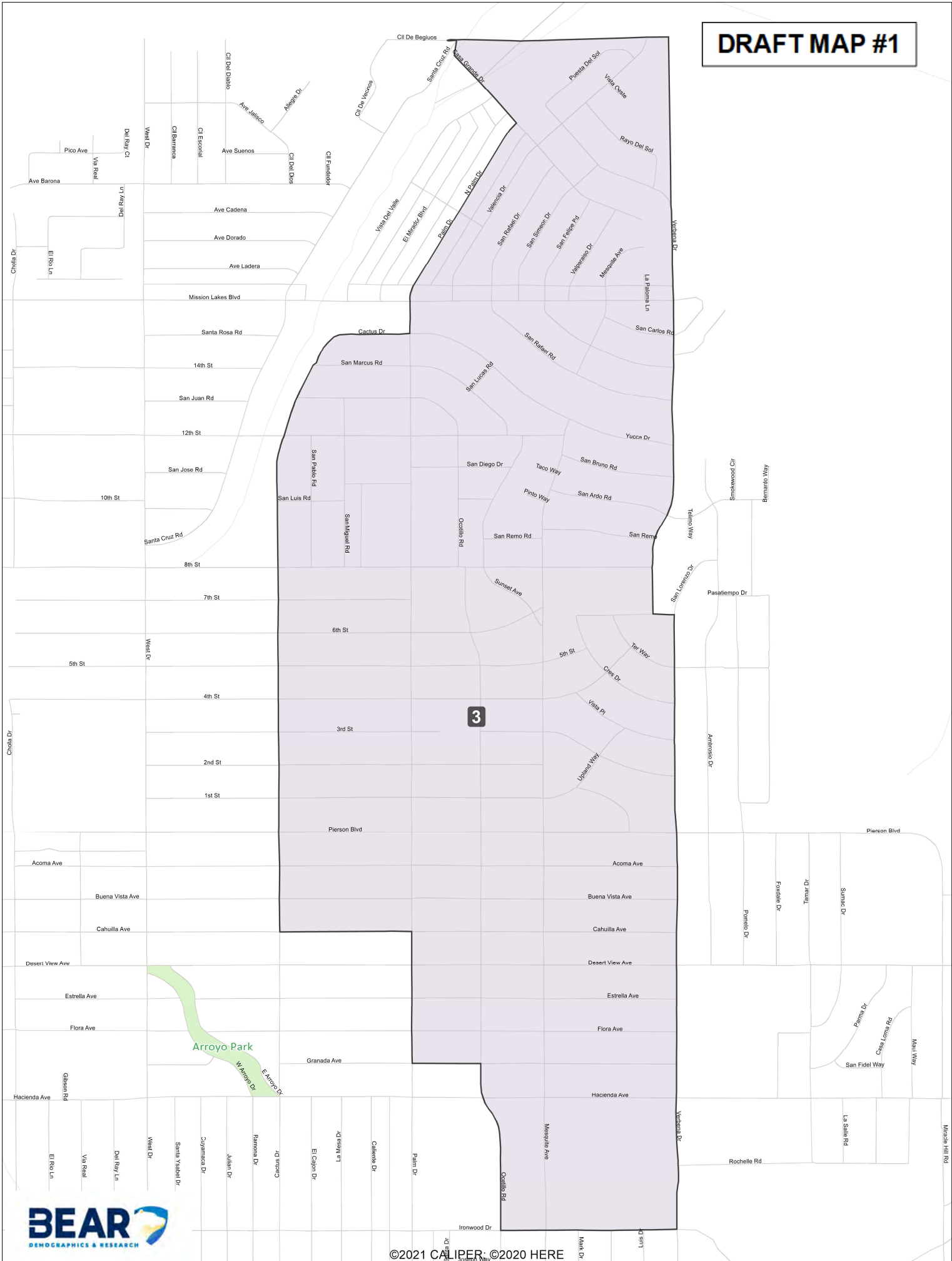


2

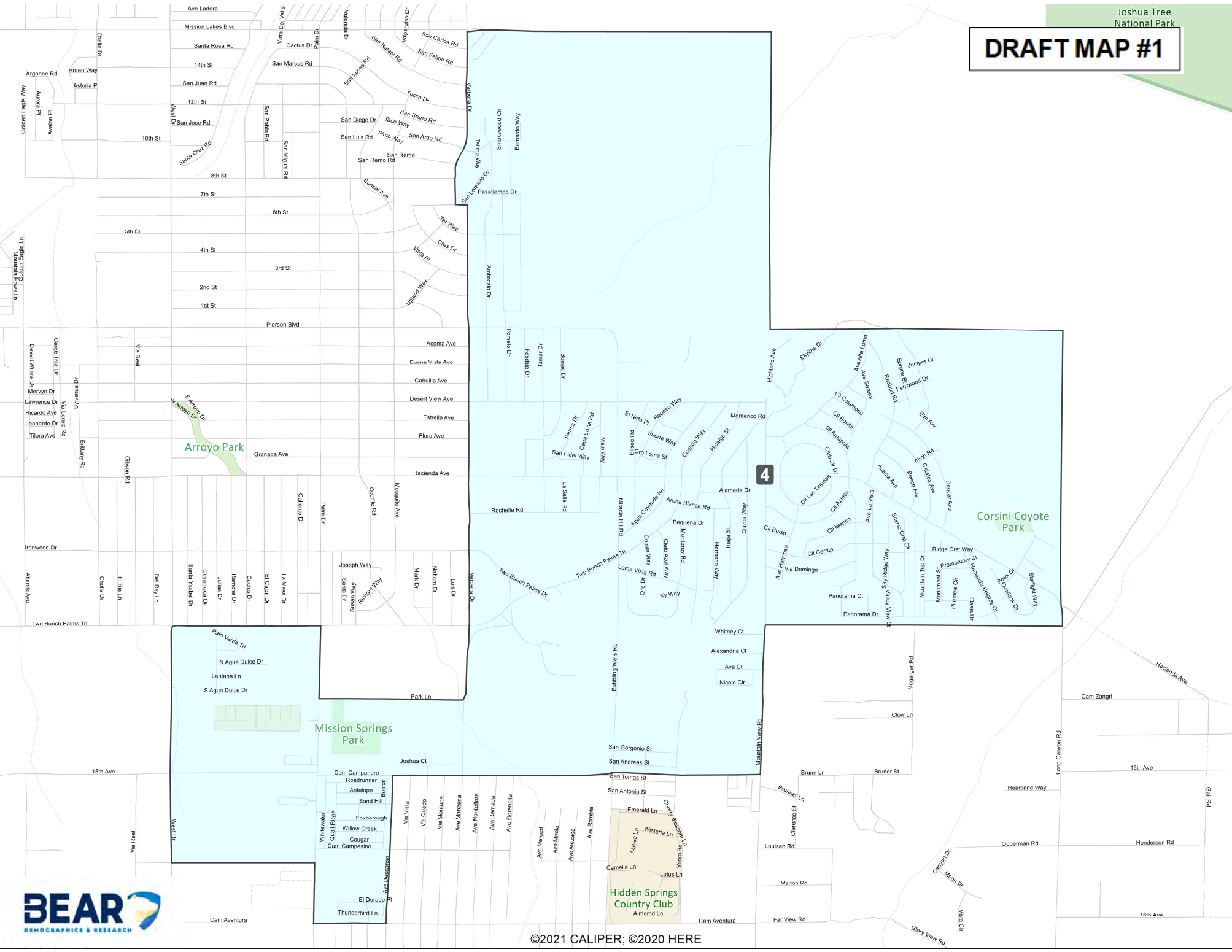
Mission Lakes Country Club



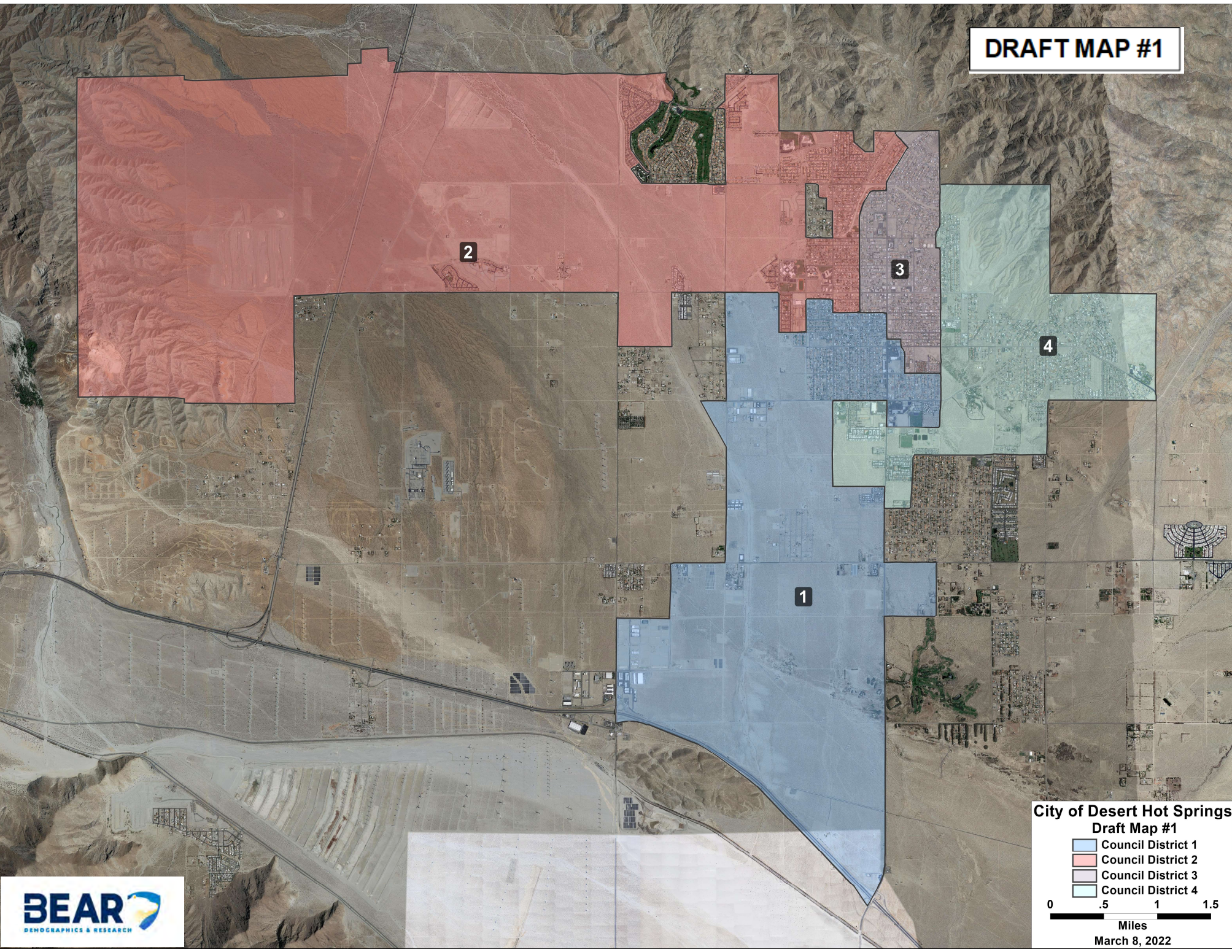
DRAFT MAP #1



DRAFT MAP #1



DRAFT MAP #1



2

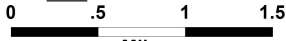
3

4

1

**City of Desert Hot Springs
Draft Map #1**

- Council District 1
- Council District 2
- Council District 3
- Council District 4



March 8, 2022



Desert Hot Springs Draft Map 1

	2020 Census State Adjusted Population											2020 Census Unadjusted
	Population	Deviation	% Deviation	Latino	White	Black	American Indian	Asian	Hawaiian Pacific Islander	Other Race	Multi Minority Race	Population
1	8201	14	0.2%	77.0%	12.7%	6.8%	0.7%	1.2%	0.1%	0.8%	0.6%	8137
2	8142	-45	-0.5%	51.4%	34.1%	7.7%	1.6%	3.4%	0.3%	1.0%	0.5%	8102
3	8220	33	0.4%	61.4%	22.9%	10.2%	1.5%	2.2%	0.2%	0.9%	0.7%	8147
4	8184	-3	0.0%	54.7%	29.3%	9.5%	1.1%	3.3%	0.3%	1.2%	0.6%	8126
City	32747			61.1%	24.7%	8.5%	1.3%	2.5%	0.2%	1.0%	0.6%	32512

	2020 Census State Adjusted Voting Age Population								2019 Tabulation Citizen Voting Age Population				
	Latino	White	Black	American Indian	Asian	Hawaiian Pacific Islander	Other Race	Multi Minority Race	Latino	White	Black	Asian	All Other
1	73.7%	15.6%	7.0%	0.8%	1.5%	0.1%	0.7%	0.6%	54.8%	24.5%	16.5%	3.1%	1.1%
2	45.6%	39.5%	7.2%	2.0%	3.8%	0.3%	1.0%	0.5%	33.6%	51.2%	10.5%	3.5%	1.1%
3	56.8%	27.5%	9.5%	1.6%	2.7%	0.3%	1.0%	0.7%	36.0%	46.0%	13.7%	2.5%	1.7%
4	49.0%	35.6%	8.2%	1.3%	3.7%	0.3%	1.2%	0.5%	32.6%	47.4%	14.4%	3.6%	2.1%
City	56.0%	29.8%	8.0%	1.4%	3.0%	0.2%	1.0%	0.6%	38.8%	42.7%	13.8%	3.2%	1.5%

District	2019 American Community Survey Socio-economic Characteristics												
	Household Income				Income Below Poverty	Education Level			Owner Occupied Housing	Language Spoken at Home			
Less than \$35K	\$35K to \$74,999	\$75K to \$149,999	\$150K or More	No High School Diploma		No College Degree	Any College Degree	English Only		Spanish	Asian Language	Other Language	
1	54.8%	30.9%	13.4%	0.9%	34.7%	33.6%	49.4%	17.0%	42.5%	46.4%	48.4%	2.6%	2.6%
2	42.3%	33.4%	20.1%	4.3%	25.8%	18.9%	59.0%	22.1%	57.4%	67.4%	28.2%	1.9%	2.4%
3	57.8%	26.0%	12.7%	3.4%	32.1%	26.8%	59.5%	13.7%	33.6%	63.5%	33.2%	1.7%	1.6%
4	48.7%	33.5%	15.6%	2.2%	27.4%	24.0%	54.7%	21.3%	50.2%	50.0%	46.5%	1.7%	1.9%
City	51.0%	30.9%	15.4%	2.7%	30.1%	25.9%	55.6%	18.5%	45.8%	56.2%	39.7%	2.0%	2.1%